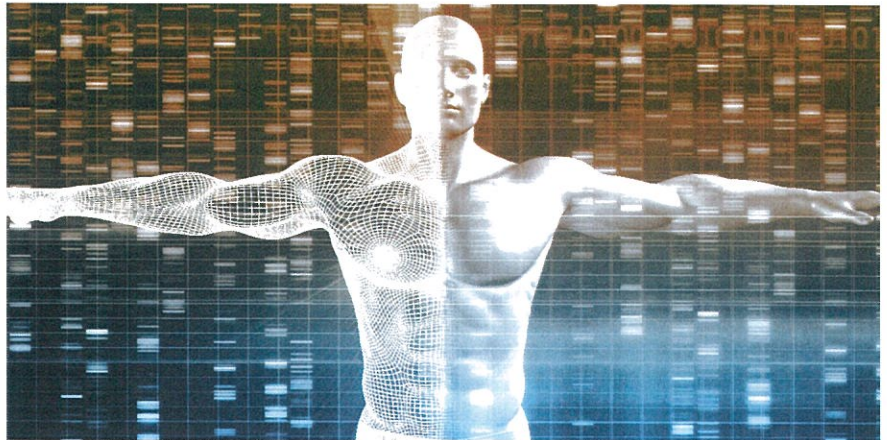




ABOUT PRECISION ONCOLOGY

Precision oncology is transforming cancer care from a “one size fits all” approach to one that uses the unique genetic fingerprint of each patient’s cancer to predict the optimal course of treatment.

With precision oncology, the individual patient, not the disease type in general, guides treatment decisions. This type of specific personalized approach provides an opportunity to offer molecularly targeted therapies to patients who have few other treatment options.



Recent advances in biotechnology now permit relatively rapid and cost-effective characterization of tumors’ genetic profiles, providing a wealth of high resolution data that can help predict the best course of treatment for prostate cancer patients.

Oncology is the clear choice for enhancing the near-term impact of precision medicine.

— Francis Collins, MD, PhD, *New England Journal of Medicine*

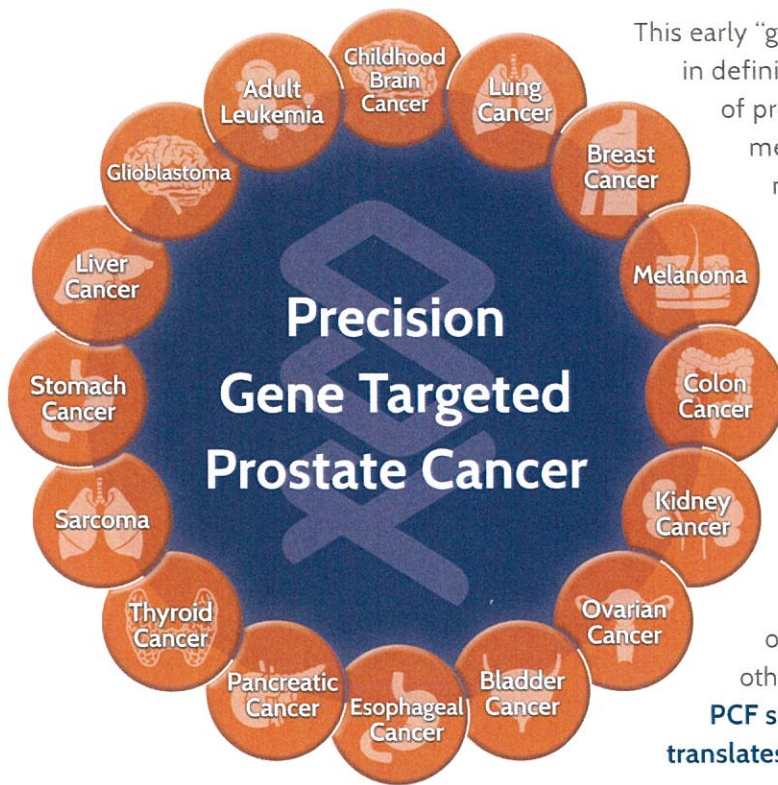
The Prostate Cancer Foundation (PCF) is leading the precision oncology revolution in science and medicine. As the largest source of philanthropic support for prostate cancer research in the world, PCF has raised more than \$700 million and provided funding to more than 2,000 research projects at more than 200 cancer centers and universities in 19 countries. PCF has specifically focused on bringing precision medicine from a concept to a reality for all patients, through funding first-of-its-kind research by international, multidisciplinary teams of scientists.

With PCF-funding, these scientists have created the technologies, methods, and institutional structures necessary for precision medicine to actually be performed by doctors. PCF researchers are also performing precision medicine clinical trials to validate which therapies work best against tumors with different genomic alterations, and get those therapies FDA-approved.

PCF RESEARCH MAKING A DIFFERENCE FOR MANY CANCERS

PCF has supported the robust multi-institutional integrative clinical sequencing infrastructure for prostate cancer that has enrolled over 700 metastatic prostate cancer patients and providing tens of millions of funding to teams of scientists across the U.S. to accomplish this feat.

The accumulated data constitutes the largest collection of research findings of metastatic prostate cancer patients on a single computational platform combined to date.



This early “google maps” of prostate cancer is a critical first step in defining the patterns necessary for the development of precise treatment plans and understanding the mechanism behind why tumors with different molecular profiles respond to various therapies.

The opportunity to change medical research history through precision oncology extend beyond prostate cancer. Cancer is no longer an organ specific disease. The cure for cancer lies in targeted drug interventions for responsive gene targets. Prostate cancer shares gene targets with a number of other cancers. When a drug works for a target it may work for all the cancers that share the target.

Several discoveries in prostate cancer precision oncology now extend to saving lives in more than 16 other forms of cancer. **The bottom line: the work that PCF supports increasingly benefits all cancer patients and translates to even more lives saved.**

JOIN OUR EFFORTS – A ROADMAP FOR PRECISION ONCOLOGY

- PCF is now assembling a large-scale team science project to match patients with sub-studies testing investigational new treatments based on their unique molecular profiles.
- We are building a PCF “knowledge network” that promises to render diagnosis and treatment more precisely for each individual no matter what stage of diagnosis.
- **PCF is your best investment in a cure.** No other organization has a more comprehensive view of the full prostate cancer landscape, or grasp of its most promising research.



**Prostate Cancer
Foundation**
Curing Together.

1250 Fourth Street, Santa Monica, CA 90401 | Tel 310.570.4700 Fax 310.570.4701 | www.pcf.org